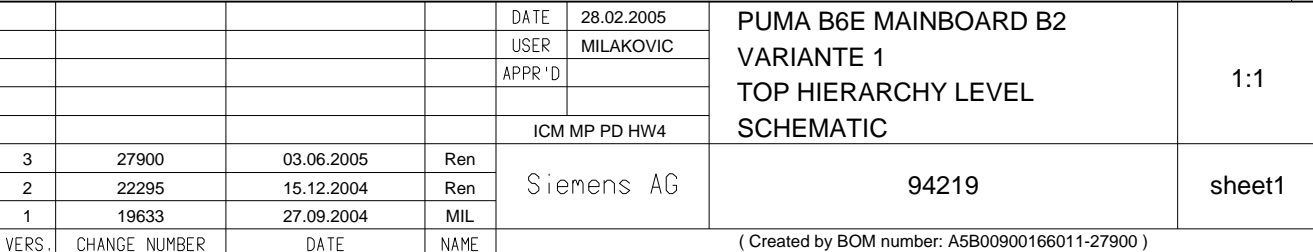


Als Betriebsgeheimnis anvertraut
Alle Rechte vorbehalten

1		2		3		4		5	
HIERARCHY						SHEET		PDF-SHEET	
A5B00900166010-19633						index		sheet 1	
						netlist1		sheet 2	
						poslist1		sheet 3	
						page1		----	
						sheet1		sheet 4	
						sheet2		sheet 5	
						sheet3		sheet 6	
						sheet4		sheet 7	
						sheet5		sheet 8	
						sheet6		sheet 9	
						sheet7		sheet 10	
						sheet8		sheet 11	
						sheet9		sheet 12	
sheet10		sheet 13							

				DATE	28.02.2005	PUMA B6E MAINBOARD B2 VARIANTE 1 TOP HIERARCHY LEVEL SCHEMATIC	1:1
				USER	MILAKOVIC		
				APPR'D			
				ICM MP PD HW4		94219	netlist1
3	27900	03.06.2005	Ren	Siemens AG			
2	22295	15.12.2004	Ren				
1	19633	27.09.2004	MIL				
VERS.	CHANGE NUMBER	DATE	NAME	(Created by BOM number: A5B00900166011-27900)			

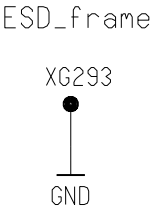
A
B
C
D
E



Proprietary data, Company confidential.
all rights reserved

Als Betriebsgeheimnis anvertraut
alle Rechte vorbehalten

RF Shielding



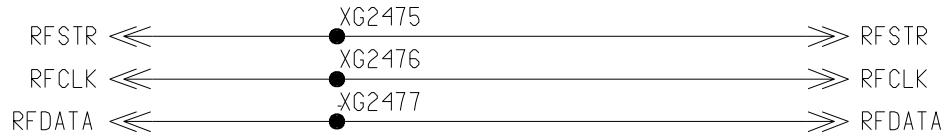
				DATE	28.02.2005	PUMA B6E MAINBOARD B2 VARIANTE 1 TOP HIERARCHY LEVEL SCHEMATIC	1:1
				USER	MILAKOVIC		
				APPR'D			
					ICM MP PD HW4	Siemens AG	94219
3	27900	03.06.2005	Ren				
2	22295	15.12.2004	Ren				
1	19633	27.09.2004	MIL				sheet2
VERS.	CHANGE NUMBER	DATE	NAME	(Created by BOM number: A5B00900166011-27900)			

Proprietary data, Company confidential.
all rights reserved

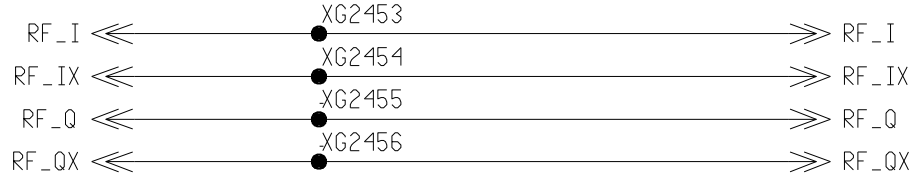
Als Betriebsgeheimnis anvertraut
alle Rechte vorbehalten

INTERFACE LOGIK/HF

2450-2499



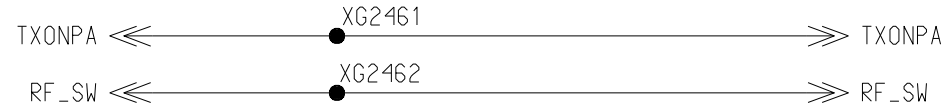
TRANCEIVER ENABLE SIGNAL
TRANCEIVER CLOCK SIGNAL
TRANCEIVER DATA SIGNAL



Bidirectional analogue RX/TX modulated signal
Baseband signals



Reference frequency correction
VCC_SYN enable for backup regulators



Power up Power amplifier
DCSTX enable Asic for Hitachisolution



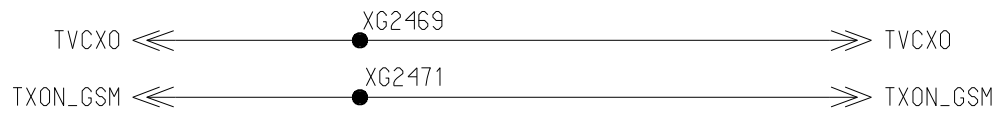
analogue power amplifier ramping signal



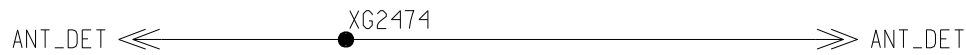
26 MHz reference frequency



Switching-signal for PA-Control IC



Temperature sensor X-tal
only Hitachi: enable for GSMTX of FEM



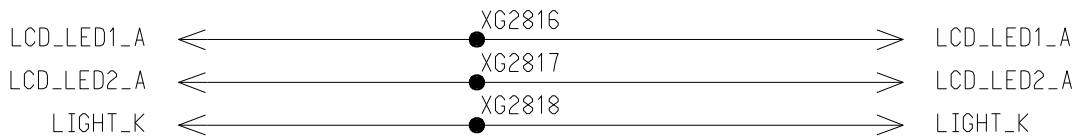
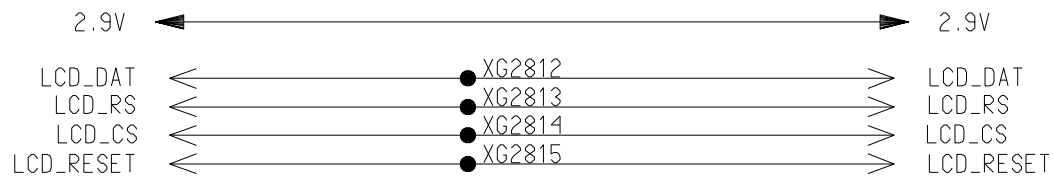
DETECTION internal/external Antenna



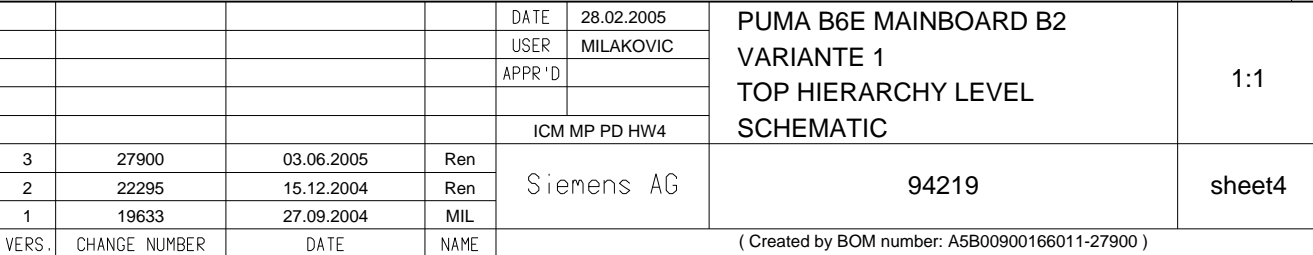
enable for backup regulator VCC2_8



Antenna _RF chamber interface



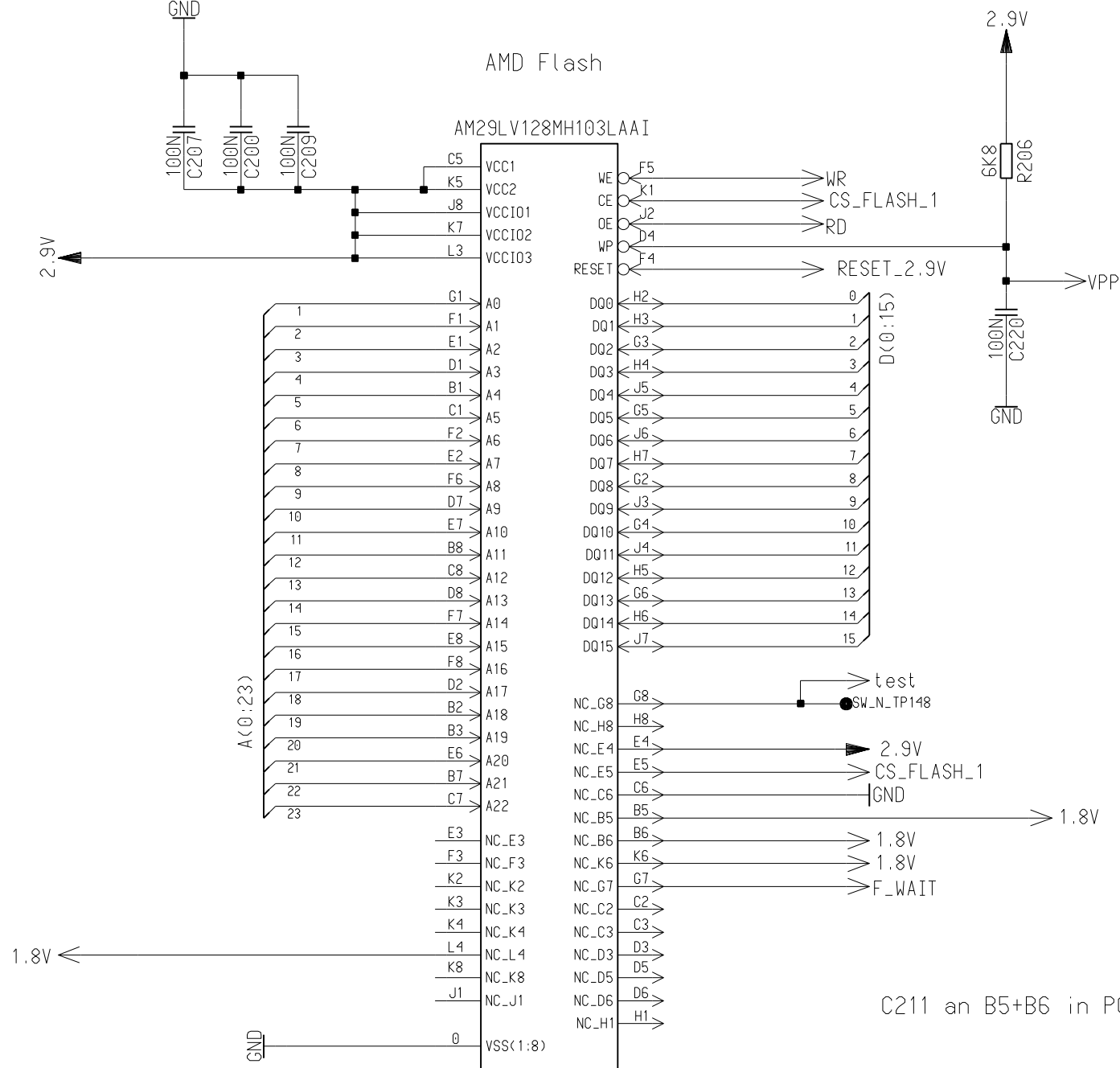
				DATE	28.02.2005	PUMA B6E MAINBOARD B2 VARIANTE 1 TOP HIERARCHY LEVEL SCHEMATIC	1:1
				USER	MILAKOVIC		
				APPR'D			
				ICM MP PD HW4			
3	27900	03.06.2005	Ren	Siemens AG		94219	sheet3
2	22295	15.12.2004	Ren				
1	19633	27.09.2004	MIL				
VERS.	CHANGE NUMBER	DATE	NAME	(Created by BOM number: A5B00900166011-27900)			



BASEBAND_FLASH_GSM

201 - 210

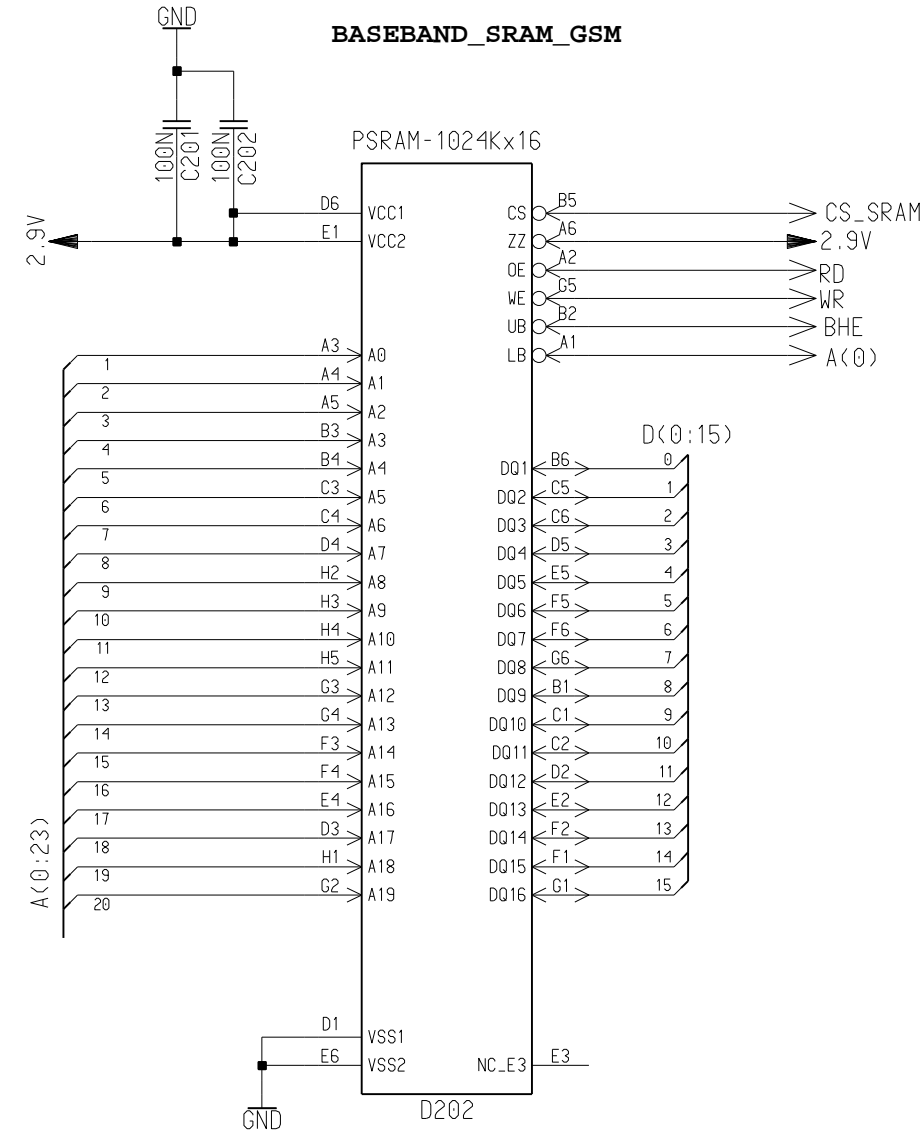
C200 an J8+K7+K5 in PCB
C209 an C5 in PCB
C207 an L3 in PCB



C210 an L4+K6 in PCB

C211 an B5+B6 in PCB

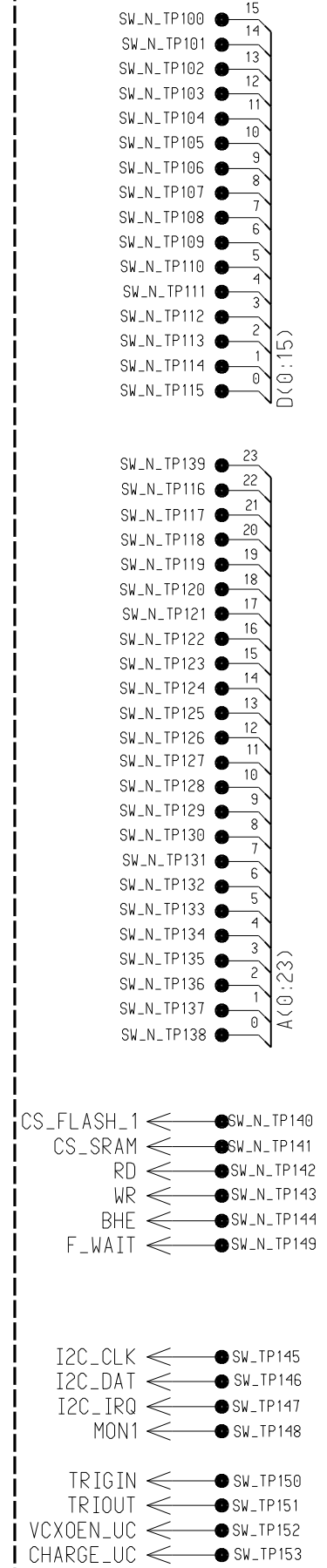
BASEBAND_SRAM_GSM



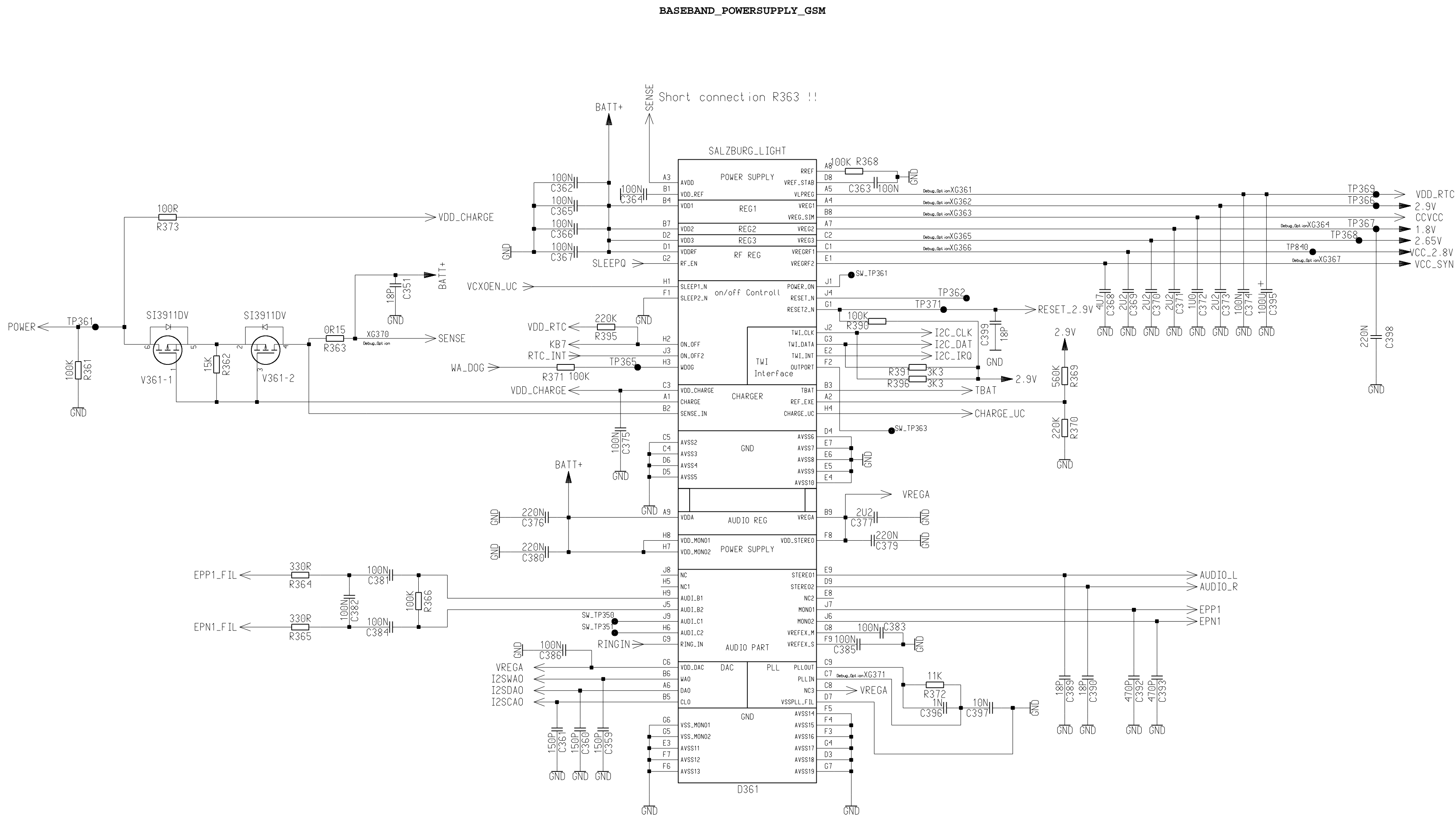
STM Flash

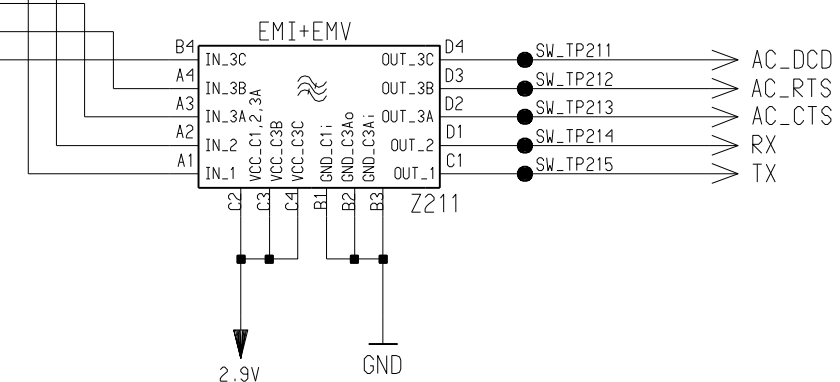
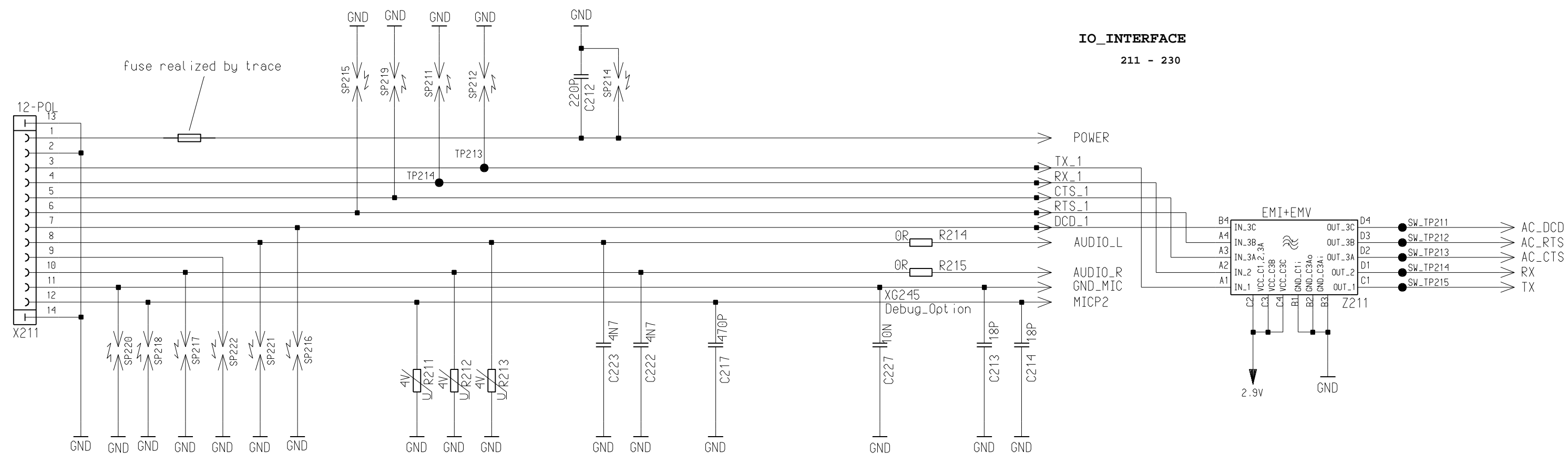
SW-TESTPUNKTE

100 - 153

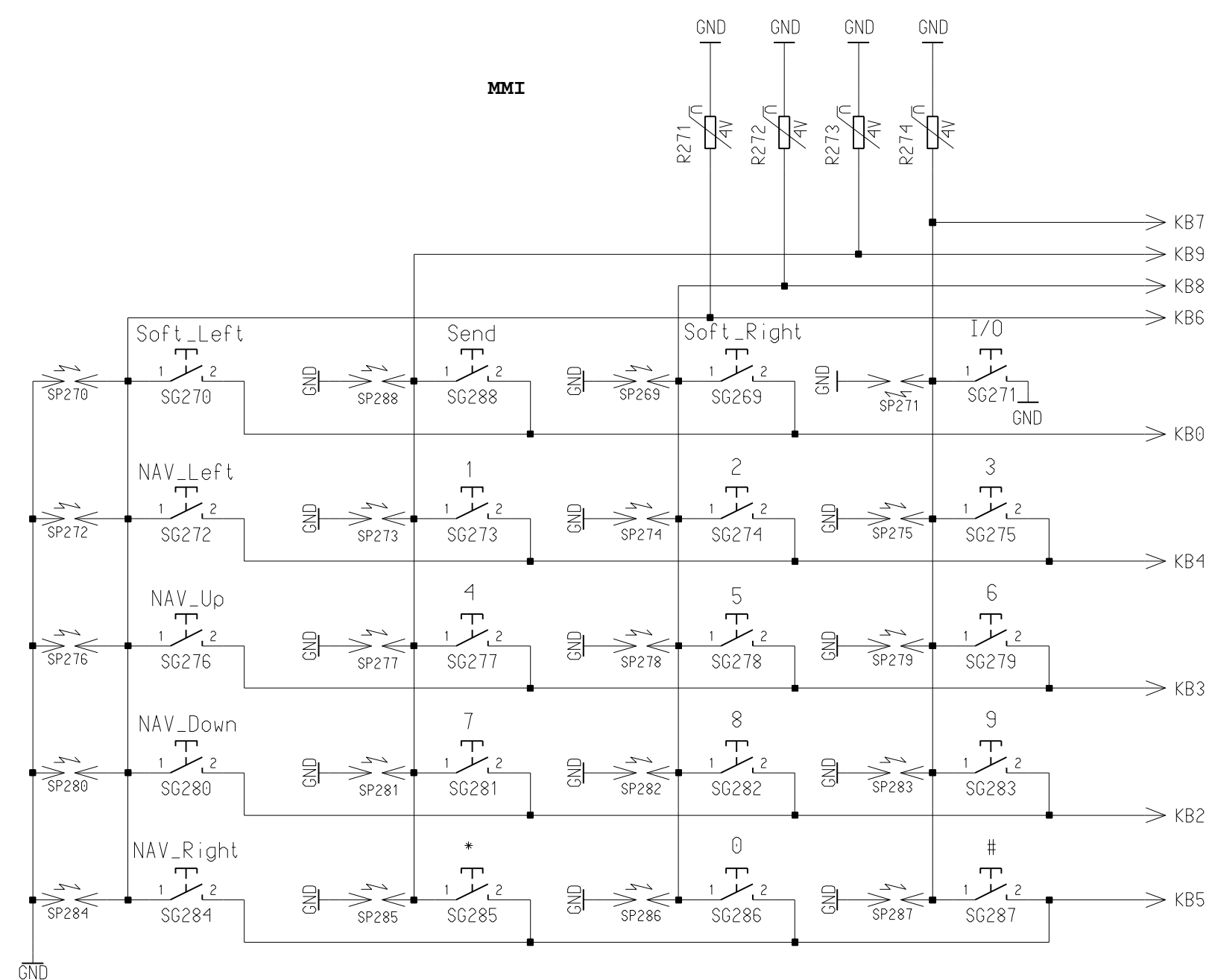
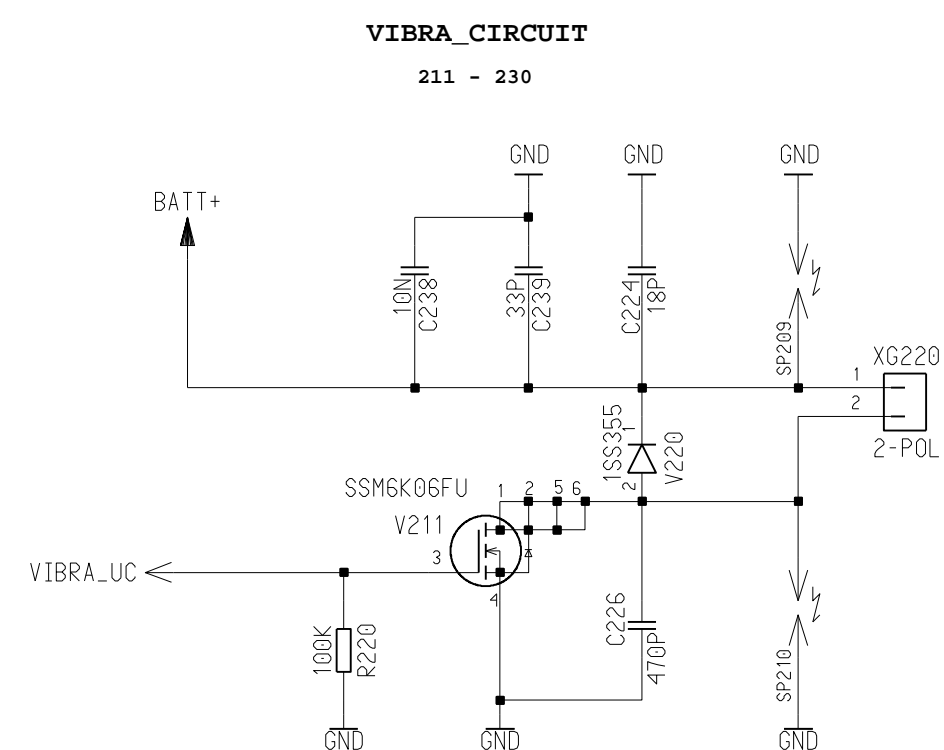
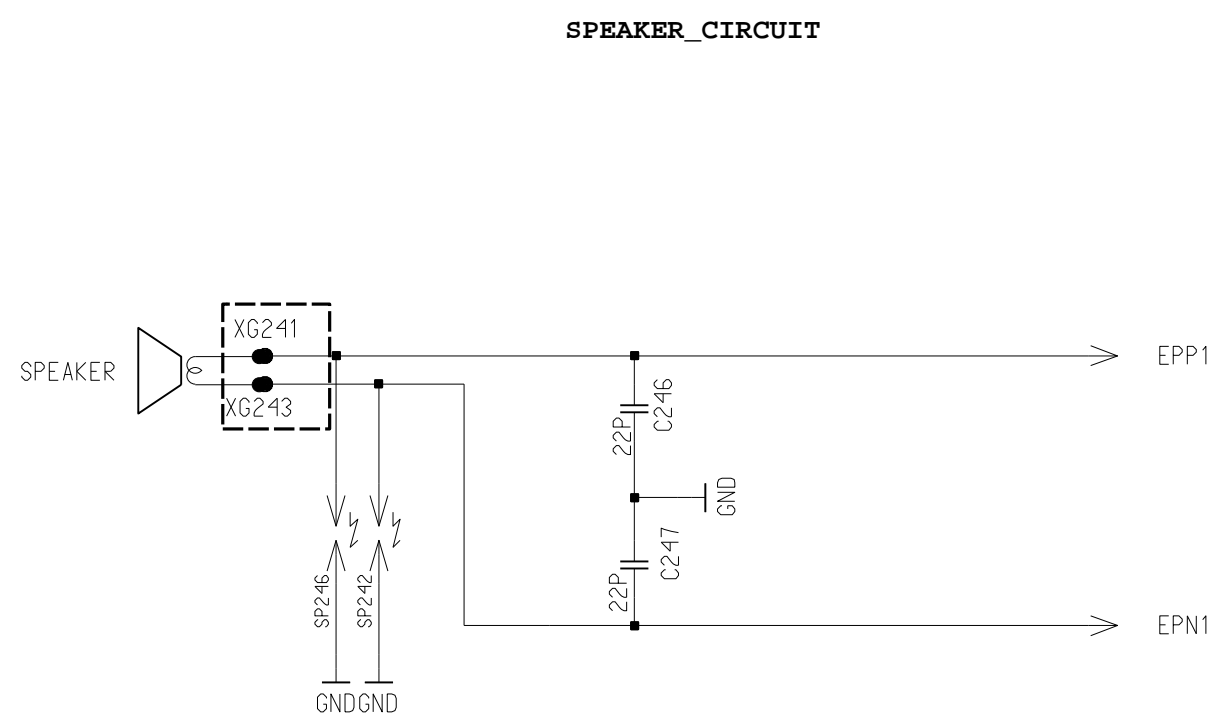
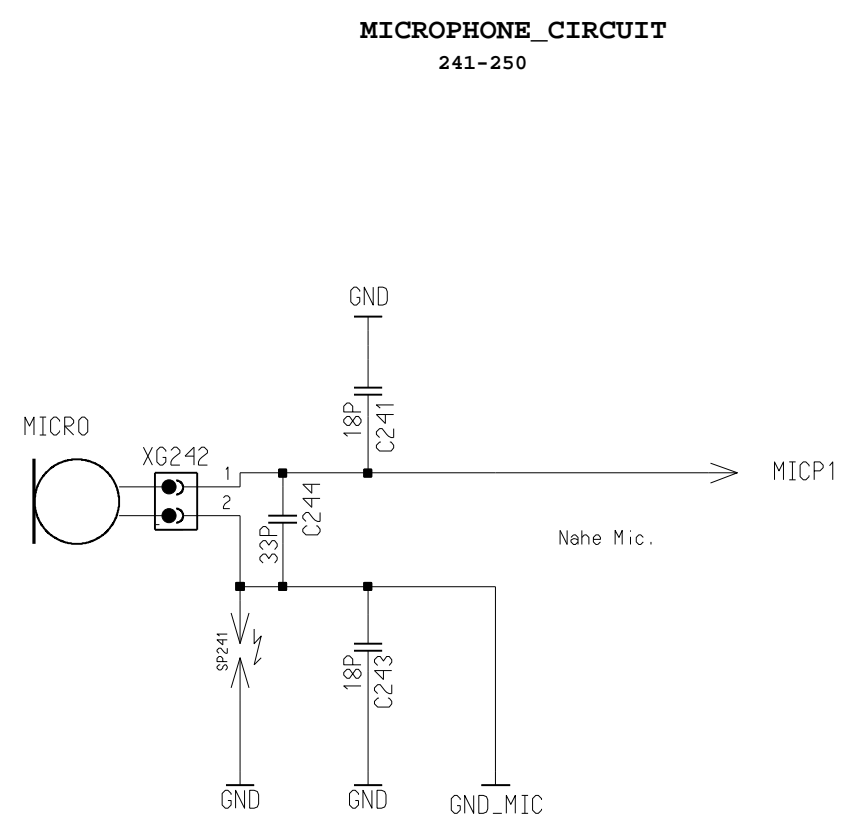


				DATE	28.02.2005	PUMA B6E MAINBOARD B2 VARIANTE 1 TOP HIERARCHY LEVEL SCHEMATIC	1:1
				USER	MILAKOVIC		
				APPR'D			
					ICM MP PD HW4		
3	27900	03.06.2005	Ren	Siemens AG		94219	sheet5
2	22295	15.12.2004	Ren				
1	19633	27.09.2004	MIL				
VERS.	CHANGE NUMBER	DATE	NAME	(Created by BOM number: A5B00900166011-27900)			

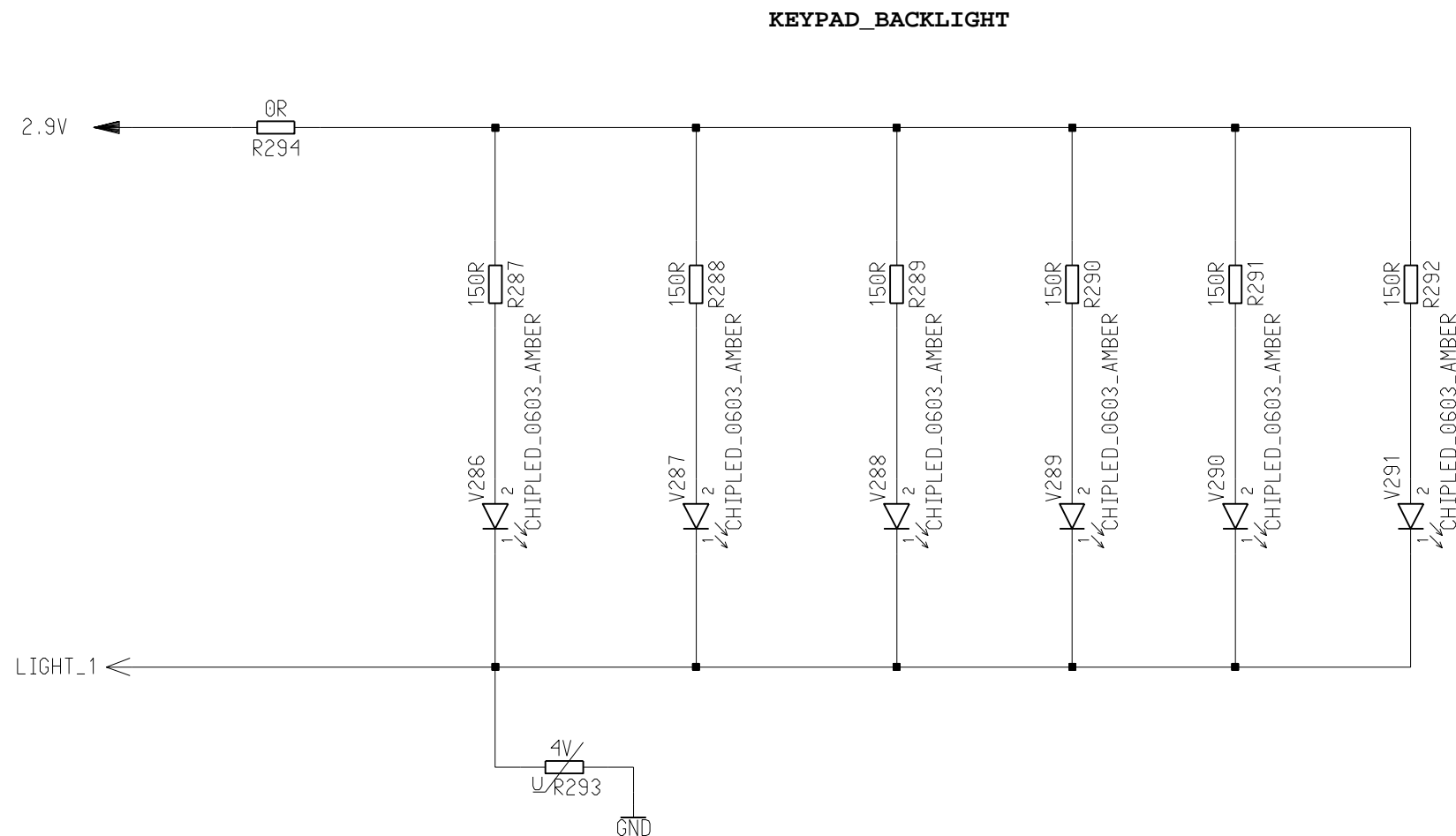
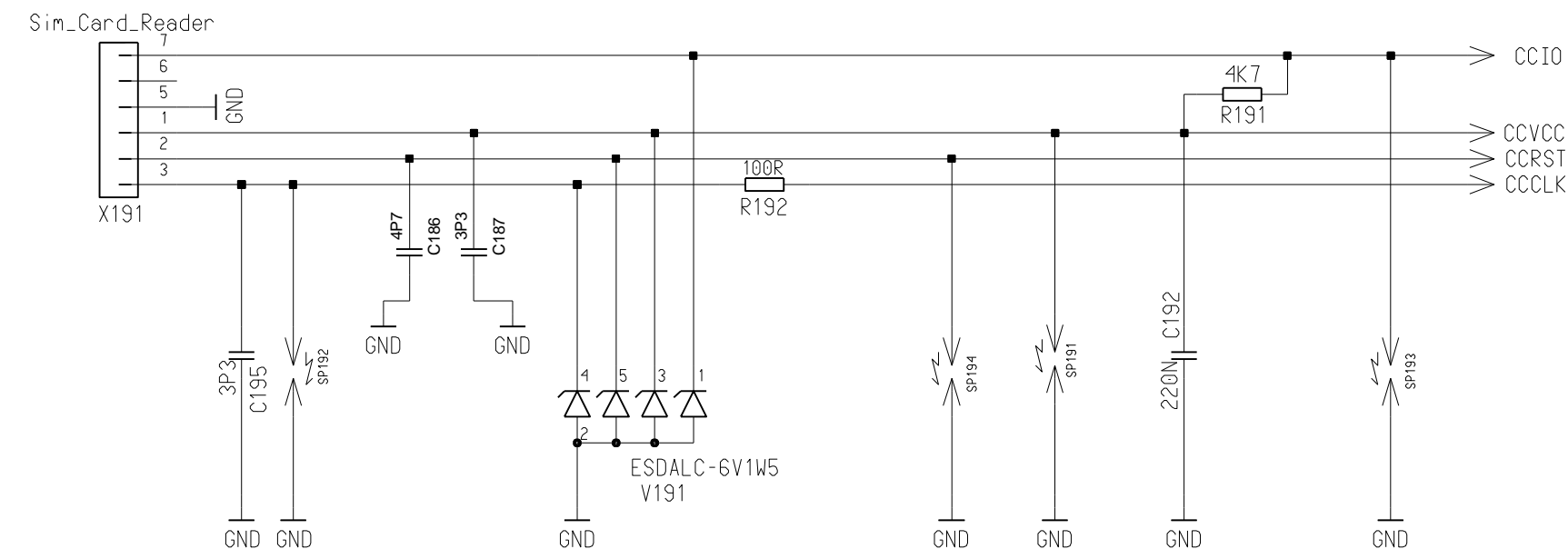
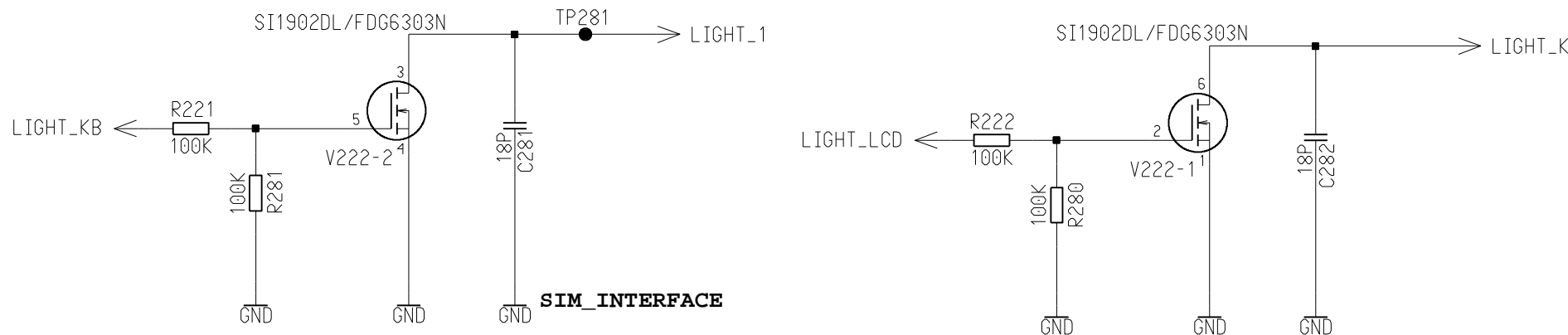
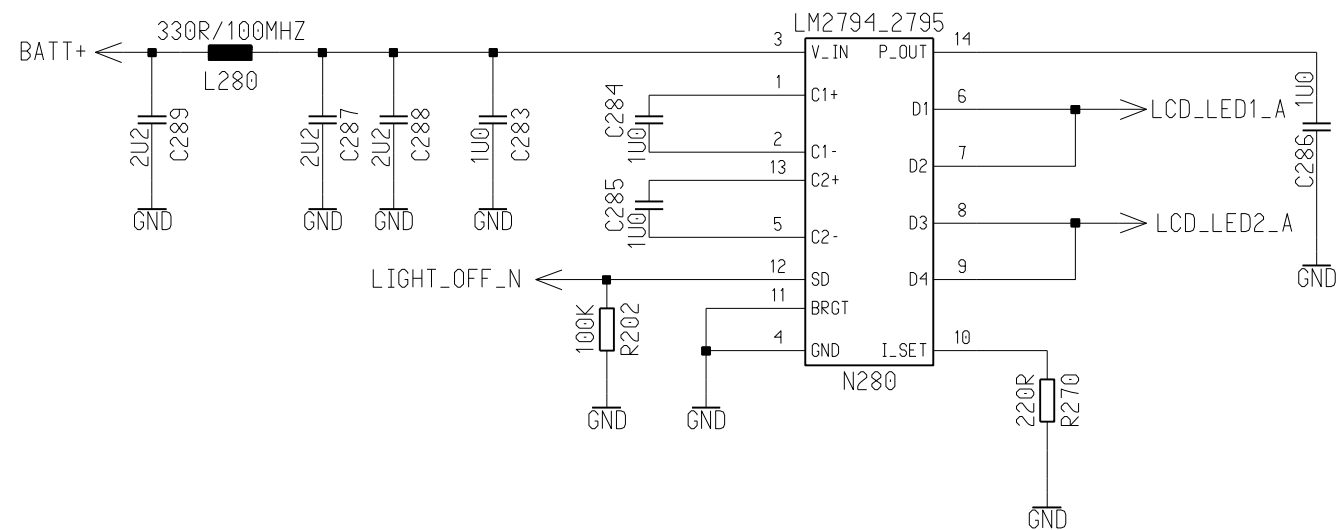




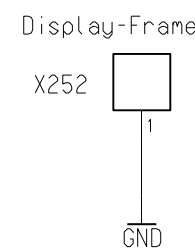
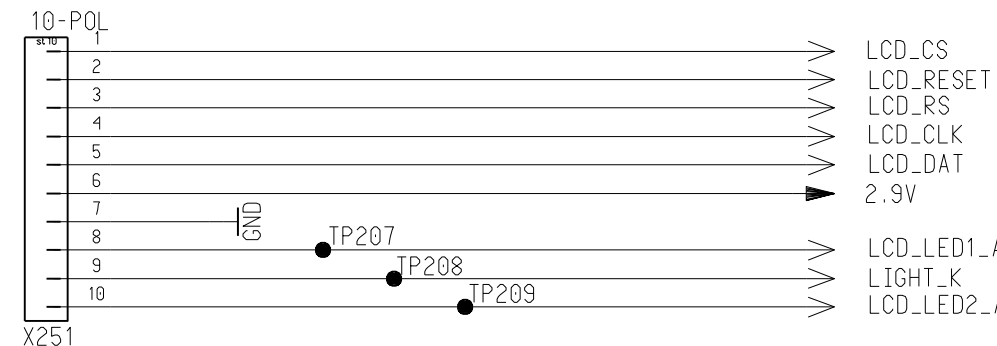
				DATE	28.02.2005	PUMA B6E MAINBOARD B2 VARIANTE 1 TOP HIERARCHY LEVEL SCHEMATIC	1:1
				USER	MILAKOVIC		
				APPR'D			
					ICM MP PD HW4		
3	27900	03.06.2005	Ren	Siemens AG	94219	sheet7	
2	22295	15.12.2004	Ren				
1	19633	27.09.2004	MIL				
VERS.	CHANGE NUMBER	DATE	NAME	(Created by BOM number: A5B0090016601-1-27900)			



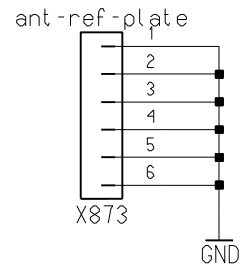
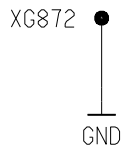
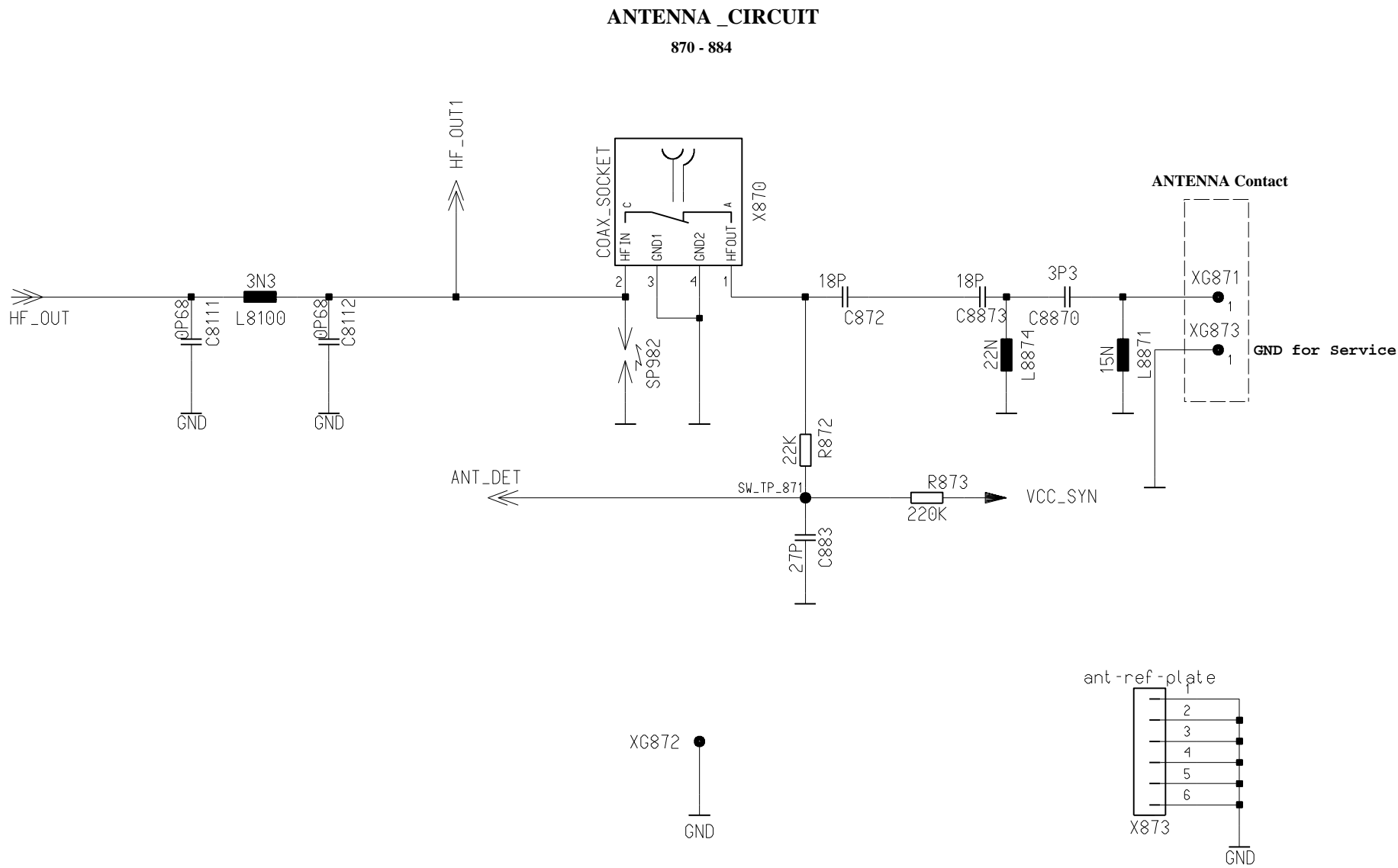
				DATE	28.02.2005	PUMA B6E MAINBOARD B2 VARIANTE 1 TOP HIERARCHY LEVEL SCHEMATIC	1:1
				USER	MILAKOVIC		
				APPR'D			
					ICM MP PD HW4		
3	27900	03.06.2005	Ren	Siemens AG	94219		sheet8
2	22295	15.12.2004	Ren				
1	19633	27.09.2004	MIL				
VERS.	CHANGE	NUMBER	DATE	NAME	(Created by BOM number: A5B00900166011-27900)		



Logic/Display_Interface 251-270



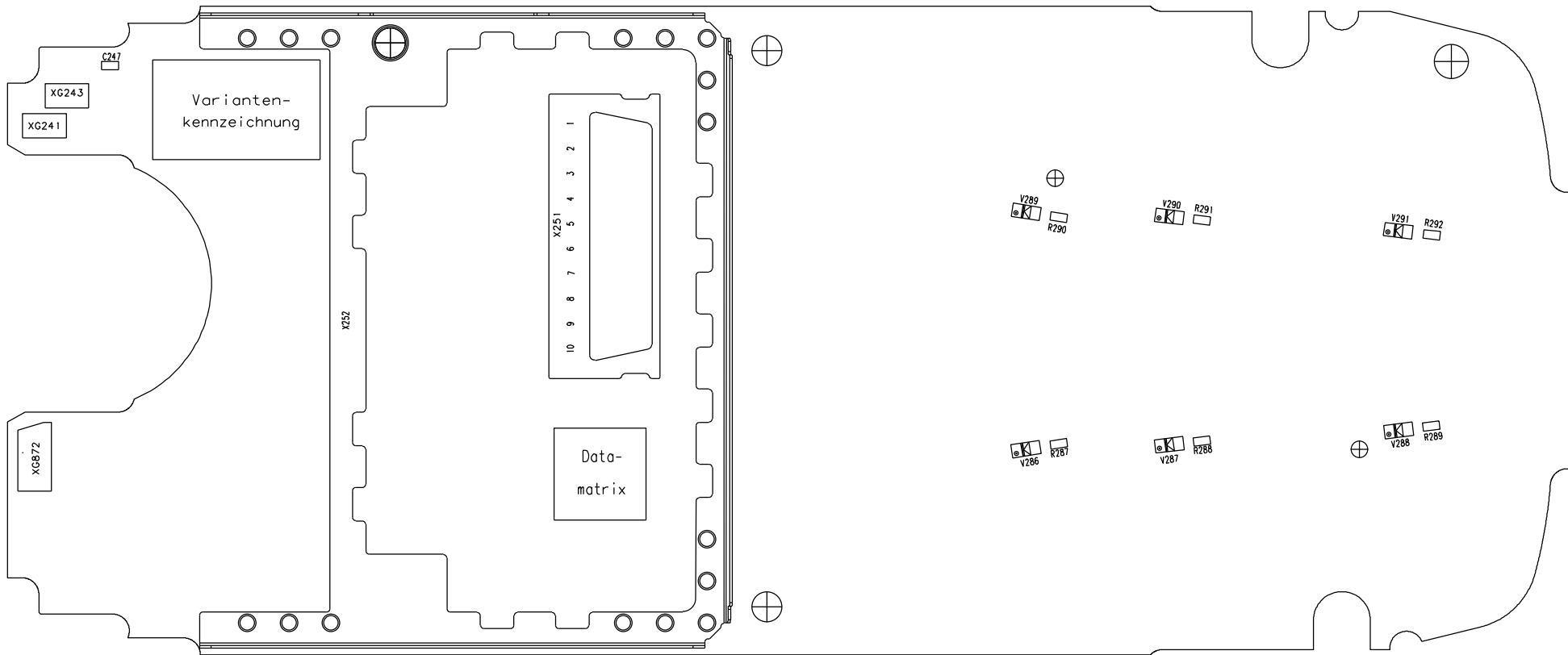
				DATE	28.02.2005	PUMA B6E MAINBOARD B2 VARIANTE 1 TOP HIERARCHY LEVEL SCHEMATIC	1:1
				USER	MILAKOVIC		
				APPR'D			
				ICM MP PD HW4			
3	27900	03.06.2005	Ren	Siemens AG		94219	sheet9
2	22295	15.12.2004	Ren				
1	19633	27.09.2004	MIL				
VERS.	CHANGE NUMBER	DATE	NAME	(Created by BOM number: A5B00900166011-27900)			



				DATE	28.02.2005	PUMA B6E MAINBOARD B2 VARIANTE 1 TOP HIERARCHY LEVEL SCHEMATIC	1:1
				USER	MILAKOVIC		
				APPR'D			
				ICM MP PD HW4			
3	27900	03.06.2005	Ren	Siemens AG		94219	sheet10
2	22295	15.12.2004	Ren				
1	19633	27.09.2004	MIL				
VERS.	CHANGE NUMBER	DATE	NAME	(Created by BOM number: A5B00900166011-27900)			

PROPRIETARY DATA, COMPANY CONFIDENTIAL
ALL RIGHTS RESERVED

ALS BETRIEBSGEHEIMNIS ANVERTRAUT
ALLE RECHTE VORBEHALTEN



C247	3B	V286	7C	X252	5B
R287	7C	V287	7C		
R288	8C	V288	9C		
R289	9C	V289	7B		
R290	7B	V290	7B		
R291	8B	V291	9B		
R292	9B	X251	5B		

Achtung : Höhenprofil C24____-____-42 (gilt nur fuer Entwicklung)
Liefervarianten siehe : V24851-Z2000-A1-*-35

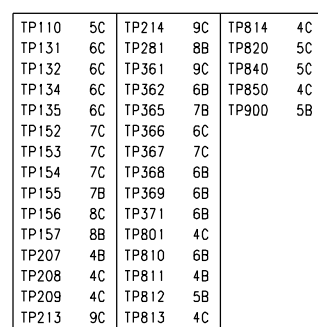
				DATE	28.02.2005	PUMA B6E MAINBOARD B2 VARIANTE 1 WIRING DIAGRAMM (SOLDER SIDE 1)	3:1
				NAME	MILAKOVIC		
				APPR'D			
				STD			
				ICM MP PD HW4		SIEMENS AG	94220
3	27900	03.06.2005	Ren				
2	22295	15.12.2004	Ren				
1	19633	27.09.2004	MIL				
VERS.	CHANGE NUMBER	DATE	NAME	(Created by BOM number: A5B00900166011-27900)			

SHEET
1+

C107	5C	C169	5B	C222	2B	C289	4A	C376	4B	C803	6B	C916	6B	L280	4A	R141	5B	R214	2B	R366	5B	R908	6B	X300	7C
C108	4C	C172	5B	C223	2B	C351	3B	C377	4B	C809	6B	C951	7C	L901	6B	R143	5B	R215	2B	R368	4B	R910	6B	X870	8C
C110	4C	C173	5B	C224	3B	C359	4B	C379	4B	C820	6C	C955	6C	L902	6B	R145	4C	R220	3A	R369	5B	R952	6C	X873	9C
C111	5C	C181	5B	C226	2B	C360	5B	C380	4B	C821	7C	C956	6C	L904	7B	R146	5C	R221	4B	R370	5B	R953	6C	Z171	5B
C113	5C	C184	7B	C227	2B	C361	4B	C381	5A	C826	7B	C958	6A	L8100	8C	R148	4B	R222	4B	R371	4B	R954	6C	Z211	2C
C151	5C	C186	3B	C238	2B	C362	5B	C382	5B	C827	7B	C960	6B	L8871	8C	R158	5B	R270	3B	R372	4B	R955	6C	Z950	6C
C152	5C	C187	3B	C239	2B	C363	4B	C383	4B	C828	7B	C961	7C	L8874	8C	R160	5B	R271	5C	R373	2A	R956	6B		
C153	5C	C192	2B	C241	2C	C364	5B	C384	5B	C830	6B	C962	6B	N280	4B	R161	5C	R272	4B	R390	5B	R958	6C		
C155	5B	C195	3B	C243	2C	C365	5B	C385	4B	C831	7B	C965	7C	N901	5B	R162	5C	R273	5C	R391	5B	R960	6C		
C157	4B	C200	3C	C244	2C	C366	4B	C386	4B	C872	8C	C8111	8C	R101	3C	R167	5B	R274	4A	R395	5B	V151	5B		
C158	4C	C201	4B	C246	8B	C367	4B	C389	3B	C883	8C	C8112	8C	R102	3C	R191	3B	R280	4B	R396	5B	V191	3B		
C159	4C	C202	3B	C281	4B	C368	5B	C390	3B	C886	6B	C8870	8C	R103	5C	R192	3B	R281	4B	R805	6C	V211	3B		
C160	4C	C207	3B	C282	3A	C369	5B	C392	4B	C887	7B	C8873	8C	R104	3C	R198	3C	R293	3B	R824	7B	V220	2B		
C161	4B	C209	3C	C283	4B	C370	5B	C393	4B	C902	6B	D171	5C	R105	5C	R199	4B	R294	2B	R872	8C	V222	4B		
C162	4C	C212	2C	C284	4B	C371	4B	C395	5C	C905	6B	D202	4B	R136	5B	R202	4B	R361	2B	R873	8C	V361	2B		
C163	5B	C213	3C	C285	4A	C372	4B	C396	4B	C909	6B	D204	3C	R137	5C	R206	3C	R362	3B	R881	6B	X100	3C		
C164	5C	C214	3C	C286	4B	C373	5B	C397	4B	C910	6B	D361	5B	R138	5B	R211	2B	R363	3B	R882	7B	X181	6A		
C165	5B	C217	2B	C287	4B	C374	4B	C398	5C	C911	6B	D902	7B	R139	5C	R212	2B	R364	5A	R902	6B	X191	2B		
C166	5C	C220	3C	C288	4B	C375	2A	C399	4B	C913	7B	D903	7B	R140	4B	R213	2B	R365	5B	R907	6B	X211	2C		

Achtung : Hoeihenprofil C24____-____-42 (gilt nur fuer Entwicklung)
Liefervarianten siehe : V24851-Z2000-A1-*-35

				DATE	28.02.2005	PUMA B6E MAINBOARD B2 VARIANTE 1 WIRING DIAGRAMM (SOLDER SIDE 2)	3 : 1
				NAME	MILAKOVIC		
				APPR'D			
				STD			
				ICM MP PD HW4			
3	27900	03.06.2005	Ren	SIEMENS AG		94220	SHEET
2	22295	15.12.2004	Ren				2+
1	19633	27.09.2004	MIL				
VERS.	CHANGE NUMBER	DATE	NAME	(Created by BOM number: A5B00900166011-27900)			



				DATE	27.09.2004	PUMA B6E MAINBOARD B2 VARIANTE 1 TESTPOINT DIAGRAMM (SIDE 1)	3 : 1
				NAME	MILAKOVIC		
				APPR'D			
				STD			
				ICM MP PD HW4			
2	22295	15.12.2004	Ren	SIEMENS AG		94221	SHEET 1 +
1	19633	27.09.2004	MIL				
VERS.	CHANGE NUMBER	DATE	NAME	(Created by BOM number: A5B00900166011-22295)			

PROPRIETARY DATA, COMPANY CONFIDENTIAL
ALL RIGHTS RESERVED

ALS BETRIEBSGEHEIMNIS ANVERTRAUT
ALLE RECHTE VORBEHALTEN

1

2

3

4

5

6

7

8

9

10

A

B

C

D

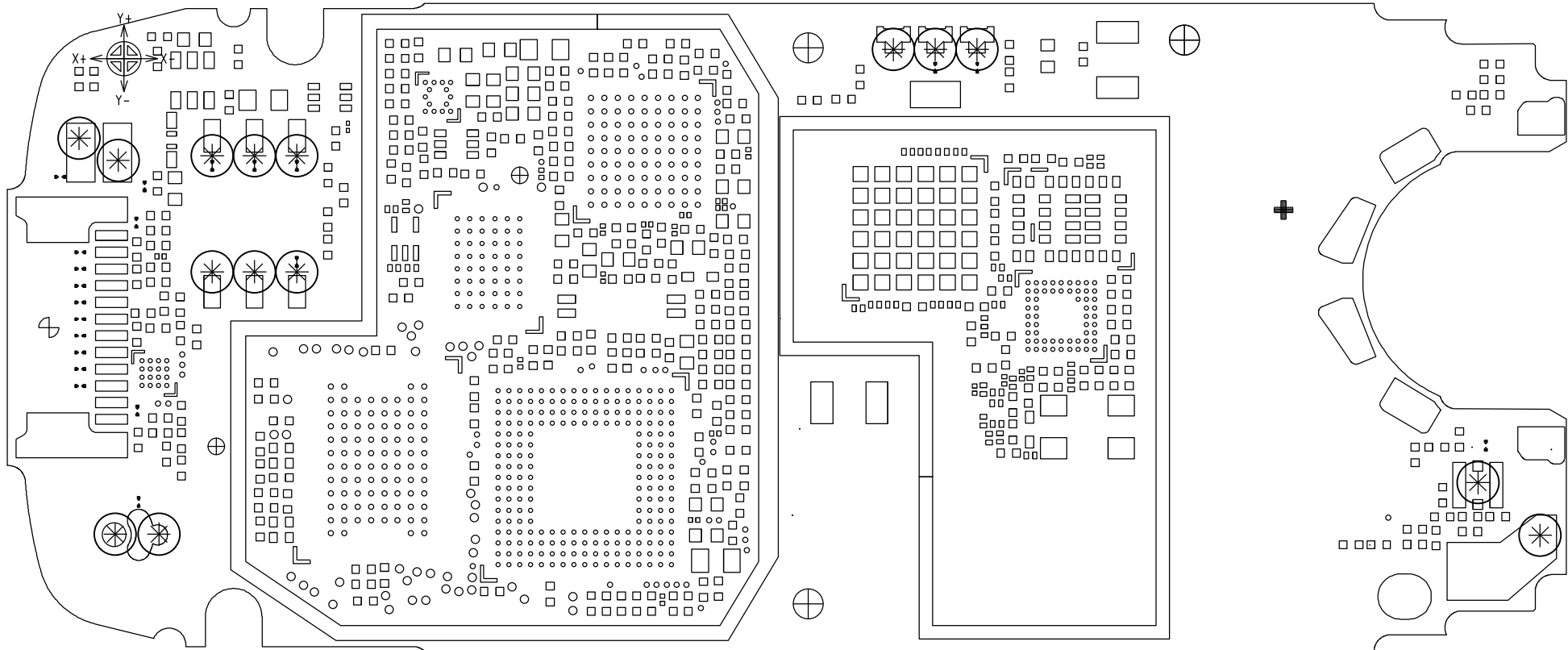
E

A

B

C

D



				DATE	27.09.2004	PUMA B6E MAINBOARD B2 VARIANTE 1 TESTPOINT DIAGRAMM (SIDE 2)	3 : 1
				NAME	MILAKOVIC		
				APPR'D			
				STD			
				ICM MP PD HW4		94221	SHEET 2-
2	22295	15.12.2004	Ren	SIEMENS AG			
1	19633	27.09.2004	MIL				
VERS.	CHANGE NUMBER	DATE	NAME	(Created by BOM number: A5B00900166011-22295)			